

Port of Port Hedland Zone 5 Bypass Channel - Geotechnical Investigation

Number: PH 11/25

Date Issued: 8/09/2025

Date of Effect:	13 September 2025
Details:	Port of Port Hedland Zone 5 Bypass Channel - Geotechnical Investigation
Duration:	Approximately three (3) weeks
Charts & Publications:	AUS 53
Further Notice:	N/A
Attachment:	<ol style="list-style-type: none">1. Borehole Locations2. JUB3. Jetwave Jemma4. Jetwave Vision

Mariners and Port users are advised that a geotechnical investigation will be undertaken in the Zone 5 Bypass Channel using the Jack-Up Barge (Ocean Driller II) supported by workboats.

Drilling works are scheduled to commence on 13th September 2025 and will continue for a period of approximately three (3) weeks.

Location & Operations

- The Ocean Driller II (JUB) will be fully lit during dark hours and positioned a minimum of 700 metres from the 30/31 Channel entry.
- No operations will be conducted during night hours.
- The JUB will not impede inbound vessel operations.
- The attached chartlet provides details of the borehole locations and the seismic survey area.

Traffic Management

- Inbound vessels are required to maintain a wide Closest Point of Approach (CPA) to the JUB.
- Vessels must proceed with caution when entering and transiting the Zone 5 Bypass Channel.
- Masters and Pilots must remain alert to the presence of the JUB and supporting vessels at all times.
- VTS will coordinate vessel movements with the dredging team and manage any potentially impacted vessels.

All current Local Marine Notices are available on our website: [Local Marine Notices](#)

Port Hedland Harbour Master Team | Phone: (08) 9173 9030 | Email: ph.hmteam@pilbaraports.com.au
Mariners and other port users are requested to notify the Harbour Master on the discovery of new or suspected dangers to navigation within the port.

VESSEL NAME	VESSEL TYPE
Jetwave Vision	Multicat/Tug
Jetwave Jemma	Workboat
Ocean Driller II	Jack-Up Barge

All vessels engaged in the campaign will maintain a listening watch on VHF Channels 12 and 16 (Port Hedland VTS).

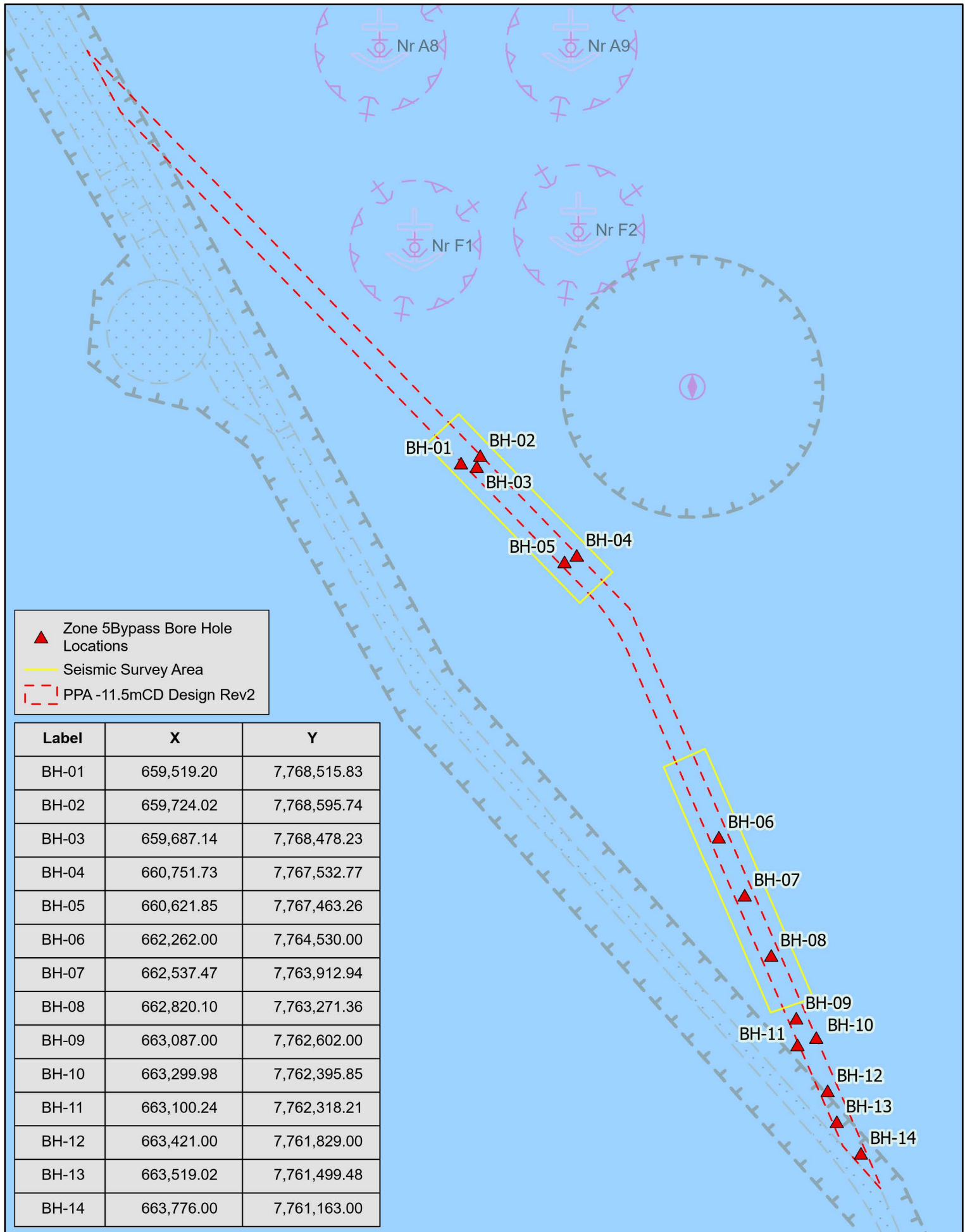
Traffic monitoring and coordination will be provided by Port Hedland VTS as required.

Any questions or feedback regarding this Local Marine Notice should be addressed to the Port Hedland Harbour Master Team.

Thank you.



Behrouz Daei Zadeh
Harbour Master East (Port Hedland)



Port Hedland Zone 5 Bypass Channel Borehole Locations



Ocean Driller II Combifloat C-5 Series

Specifications		Dimensions	
Name	Ocean Driller II	Length overall	18.3m
Registration No:	860247	Breath overall	18.3m
AMSA Survey Class	2C	Depth of Hull	1.52m
GL Registration No:	117217	Length of Legs	34m
Classification	GL:100 A5 RSA (20)	Depth below Hull	29.00m
Callsign	Ocean Driller II	Diameter of Spud	36 inch
Propulsion	Nil (Dumb Barge)	Displacement	276.00t
Type	Self Elevating Platform	Load Line draft	1.01m
Tow Speed	3kts	Continuous Deck(s)	1
Tow Plan	Attending Launch	Jacking Speed	6 minutes / 1.2m
Fittings		Maximum Payload	84t
Gangway	Custom Built Walkway	Operating Payload	60.6t
Radio & AIS	VHF	Bollard Pull	4 – 13t
Mast	6m	Weather Conditions	
Nav lights	Port/Stbd	Towing	Wave / Wind
	Anchor	Access/egress	<1.5m / 15kts
	Mast head (solar)	Jacking up/down	<1m / 15kts
	4 x orange beacons	Current	1 m/sec
DGPS	Omni Star 8200HP	Operations	Drilling
Core & Supplies Crane		Cobra 6600 Telescopic	

Specifications are subject to change and inspections to satisfy intended use is recommended.

The Ocean Driller II is fitted with Australian AMSA Class 2C Safety Equipment and Geotechnical Drilling positioning DGPS.

Ocean Driller II carries a purpose designed tow bridal and push pull capability for accuracy of positioning.



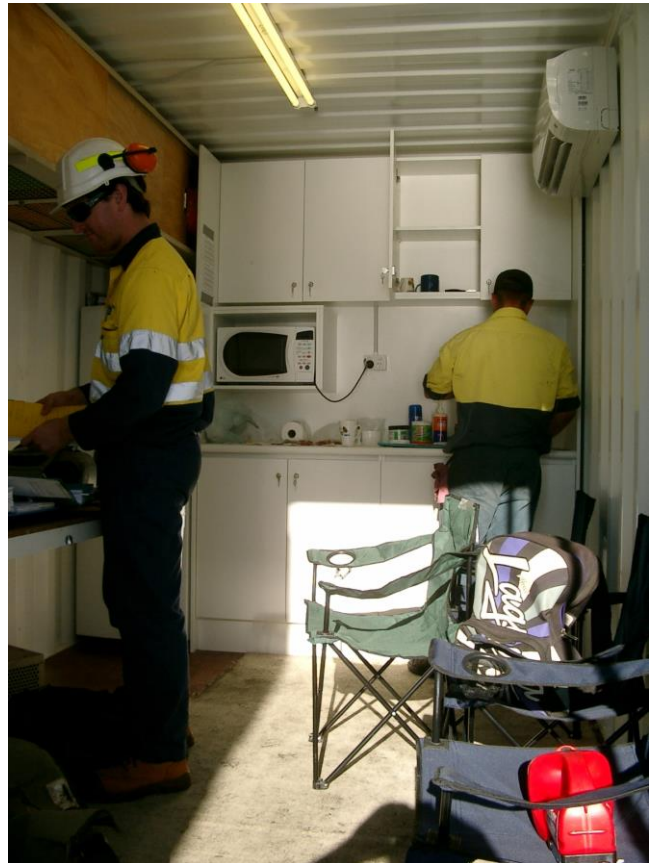
Ocean Driller II is fitted with a Crib Room that provides:

- Fridge,
- Microwave,
- Air-conditioning,
- Fresh Water supply &
- Outdoor shade area.
- 1200L freshwater tank

Standard features:

- Port-a-loo
- Geo table/indoor air-conditioned work benches
- Genset power supply to Crib Room.
- Marine Spill Kits
- Hydrocarbon bin
- Lighting

Annual Marine Surveys, Marine Surveyor approved Tow Plans. Automatic Identification System (AIS)



6600 telescopic Crane to lift core cages off to Attending Launch for transporting to wharf. Geo sampling table for inspecting & recording samples.



Safety Equipment: Guardrail system, anchor, radio, AIS, flares, Spill Kit and Marine Class 2C survival equipment, environmental containment provisions.



Drill Rig setup Rod Racks



Geo Container



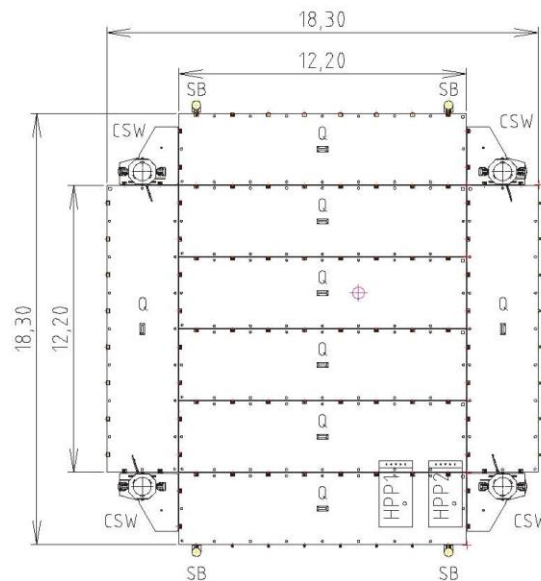
Drill Rig



2.2 Main particulars of the vessel

2.2.1 General

Length overall	18,30 m.
Breath	18,30 m.
Depth of Hull	1,52 m.
Length of Legs	34,0 meters
Depth below Hull bottom	29,00 m.
Area / diameter of Spud	36 Inch.
Operation Displacement	276,0 t. Load
Number of Continuous Deck(s)	1



See assembly drawing ASS2.C5-071.02, see paragraph 8.4



JETWAVE VISION

26m Multicat / Tug – Project Support Vessel

PARTICULARS	
Build	Armada Ships
IMO Number	397874
Survey Class	BV Tug – Unrestricted
Drive Type	Triple Screw
Hull Type	Steel
DIMENSIONS	
LOA	26.0m
Beam	11.5m
Draft	2.2m
Cargo Deck	100m ² 80T
MACHINERY	
Main Engines	3 x Yanmar AYM @ 829HP
Total Output	2487 BHP
Gearbox	Reintjes WAF364 5:1
Bow Thrusters	Hydraulic Jet @ 315HP
PERFORMANCE	
Sprint	10 knots
Cruise	6 knots
In Port	10L/hr
Bollard Pull	32T

CAPACITY	
Fuel	120m ³
Fresh Water	68m ³
Lube Oil	3.5m ³
BRIDGE	
Radio	Icom UHF, VHF & HF
Radar	Furuno
Sounder	Furuno FCV-585
GPS DGPS	Furuno GP10
ACCOMMODATION	
Bunks	6
Air Conditioning	Throughout
Amenities	2x Toilets 1x Shower
DECK EQUIPMENT	
Towing Winch	30T w/ 36m Tow Wire
AH Winch	80T w/ 50mm Work Wire
Deck Crane Fwd	Heila HLRM 240-2SL
Deck Crane Aft	Heila HLRM 140-3S
Shark Jaws	3" Chain
Towing Pins	Forward / Aft
Bow / Stern Rollers	200T / 60T SWL

**All figures and data assumed to be correct but not guaranteed.*



JETWAVE JEMMA

18m Monohull – Work Boat/Launch

PARTICULARS	
Build	Image (Phil Curran)
Year	1997
UVI	455096
AMSA Survey Class	DCV 2C
Drive Type	Twin Screw
Hull Type	Aluminium
DIMENSIONS	
LOA	18.2m
Beam	5.2m
Draft	1.6m
Cargo Deck	40m2 6T
MACHINERY	
Main Engines	2x Yanmar 6CXBM (265kW)
Generators	1x Coelmo ML740 (7.5KVA)
Propulsion	Twin 4-Blade Fixed Pitch
Gearbox	ZF 305-2A
PERFORMANCE	
Sprint	23 knots @ 200L/hr
Cruise	16 knots @ 100L/hr
In Port	4L/hr

CAPACITY	
Passengers	10 (2C)
Fuel	6,000L
Fresh Water	600L w/ Desalinator
Sullage	Holding Tank
BRIDGE	
Radio	ICOM Fixed/Portable VHF
Radar	Raymarine
Sounder	Raymarine
GPS DGPS	Raymarine
ACCOMMODATION	
Bunks	12 (Crew Only)
Air Conditioning	Throughout
Amenities	1x Toilet/Shower
ADDITIONAL EQUIPMENT	
Towing/Line Handling	2x 8T Bitts (Aft)
A-Frame	2.75T (Optional)
Cargo Handling	Open Stern / Flush Deck
Bow Transfers	Safety Rails / Fendering
Dive Support	Marlin Board / Steps

**All figures and data assumed to be correct but not guaranteed.*